

Transmittance **$U_w \geq 0.9$ (W/m²K)**

Consult typology, dimensions and glass.

Acoustic insulation

Maximum glazing	44 mm
Minimum glazing	23 mm
Maximum acoustic insulation	Rw = 45 dB

Sightlines

Frame	70 mm
Sash	70 mm

Profile Thickness

Window	1.6 mm
--------	--------

Polyamide strip length 32 mm**Maximum dimensions / Sash**

SLIM SASH

	Side hung	Top Hung
Width (L)	950 mm	1,200 mm
Height (H)	1,300 mm	1,300 mm

HEAVY DUTY SASH

	Side hung	Top Hung
Width (L)	750 mm	1,800 mm
Height (H)	1,750 mm	1,800 mm

Consult maximum weight and dimensions according to typologies.

Maximum weight / Sash

	Side hung	Top Hung
Slim sash	35 Kg	50 Kg
Heavy duty sash	42 Kg	100 Kg

Categories achieved at test centre

Protection against atmospheric agents.

Air permeability**(UNE-EN 12207): Class 4****Water tightness****(UNE-EN 12208): Class E1200****Wind resistance****(UNE-EN 12210): Class CE 2,400****Security test:** PAS24 ☒

Passed

* Reference test 1.44 x 1.33 m / 1 sash + 1 fixed light.

Security test: Reference test 1.44 x 1.33 m / 1 sash + 1 fixed light

Test verified by

ALUMINIOS CORTIZO S.A.U.**Extrusion alloy**

6063 T-5

Finishes

Possibility of dual colour.

Colour powder coating (RAL, mottled & rough).

According to Qualicoat >60 microns

Wood effect powder coating.

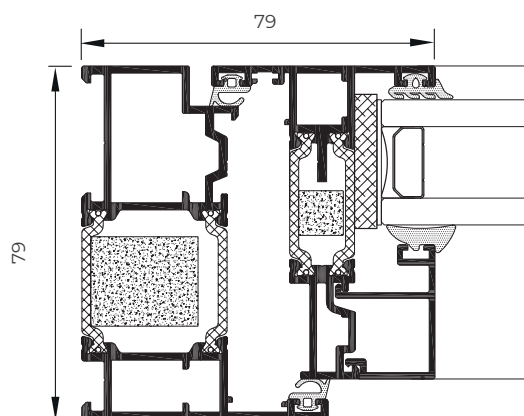
According to Qualideco standard

Anodised.

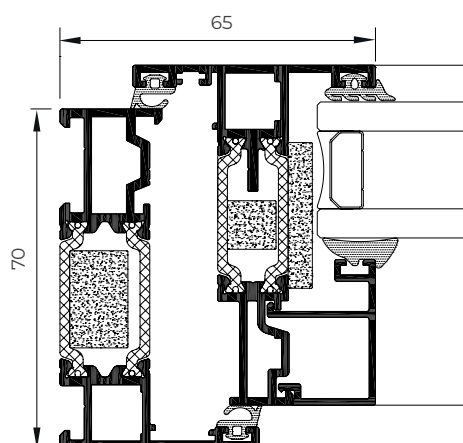
According to Ewwa Euras / Standard Class 15 / Optionally Class 20 and 25

Opening possibilities

Inward opening: side hung and top hung



* Flush version



* Standard version